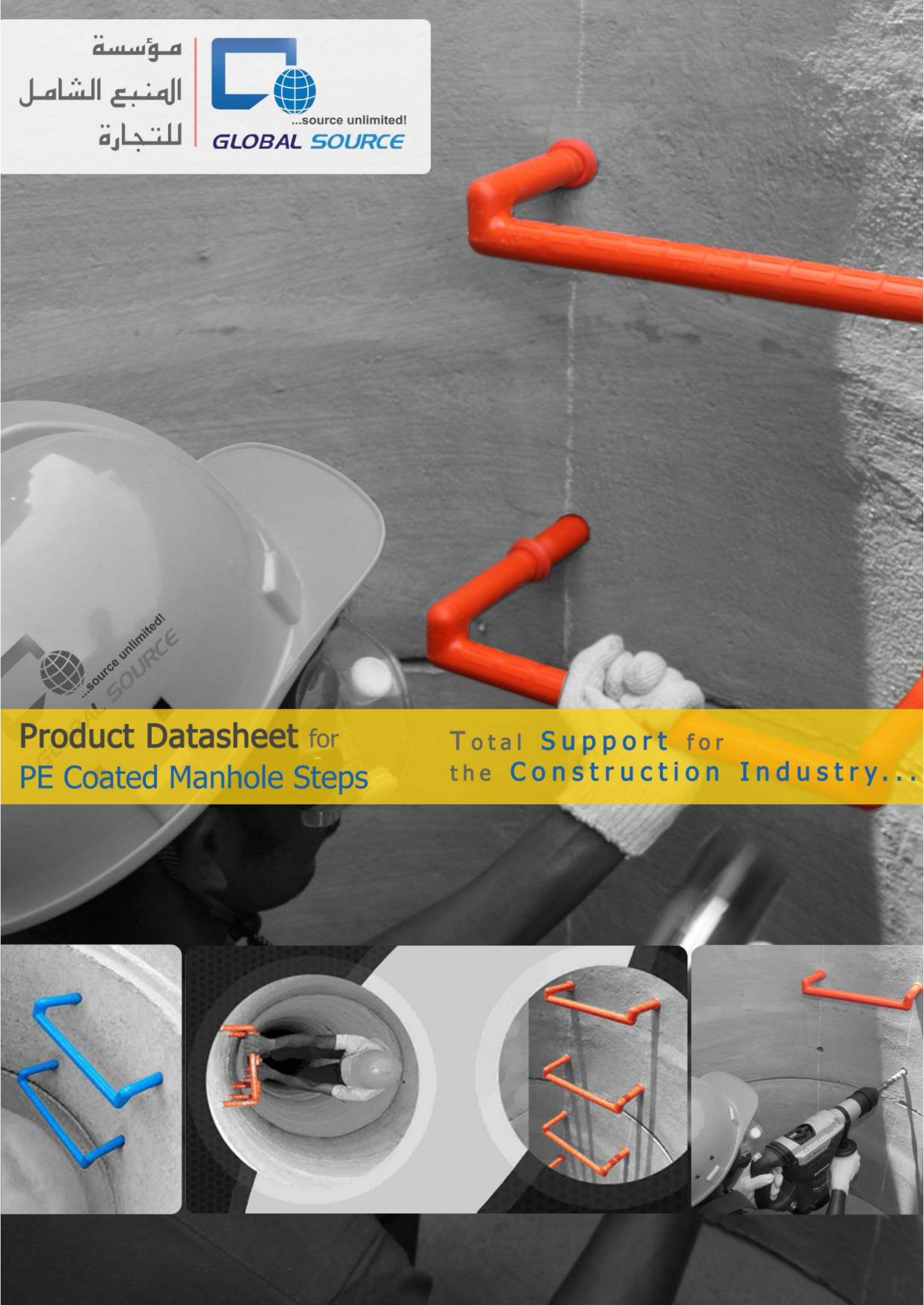
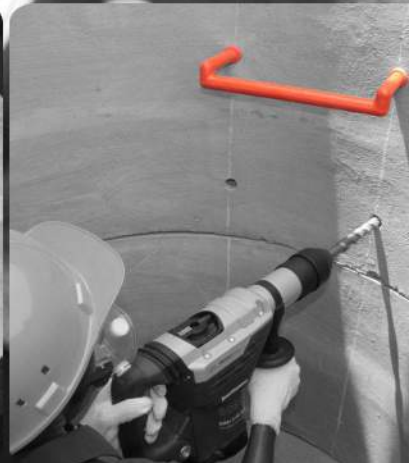
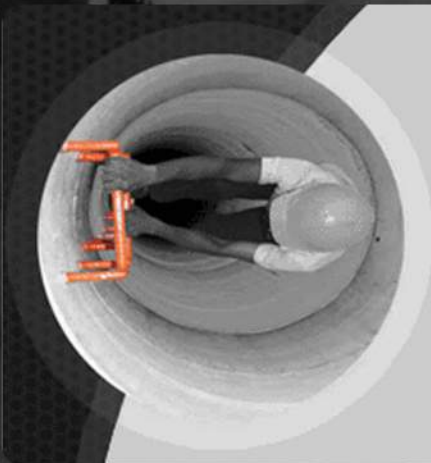
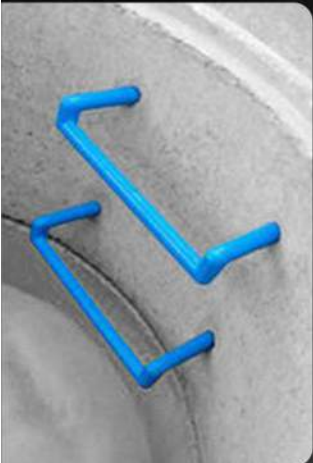


مؤسسة
المنبع الشامل
للتجارة



Product Datasheet for
PE Coated Manhole Steps

Total Support for
the Construction Industry...



We offer the highest quality of manhole rungs [Ladder Steps] of various metals like stainless steel, aluminium and galvanised steel or any other metal according to our client's requirements. These steps are exported the world over and are known for their superior quality and custom made designs.



ST GS 018



ST SS 014



ST AL 016



Our manhole rungs are:

- Safe
- Flexible and Durable
- Meeting International Health and Safety requirements
- Superior appearance
- Consistent in Weight and meeting ASTM and DIN standards

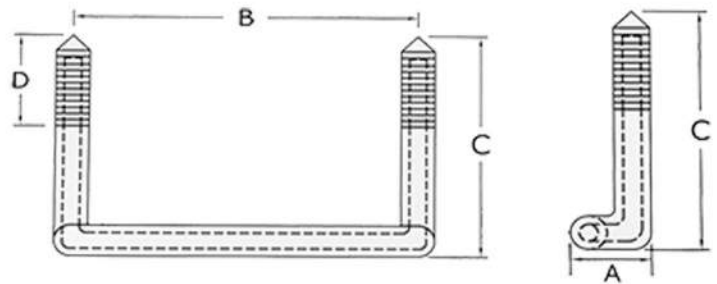
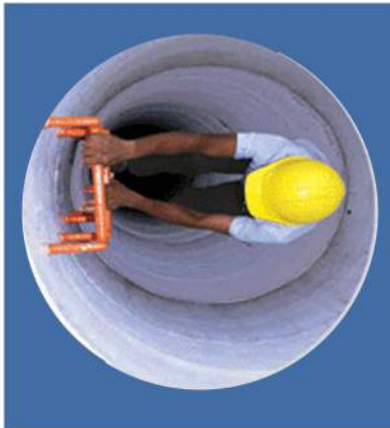
What sets us apart from our competitors?

- Covered with plastic to provide protection from all types of corrosive environments.
- Superior Resistance, in excess of international standards
- Spark-proof and polymer covered
- High impact resistance
- Extremely easy to install and completely cost effective
- No sharp edges or corners and anti-slip surfaces
- Our Manhole steps and Hand Bars are designed in order to be installed into a depth of 70mm.
- Extra Wide – Step width – 330mm

TECHNICAL DETAILS

Test Certificate: According to ASTM

Applicable Standard: German Standard DIN 19555 / BS:EN 13101



PARTICULARS	STAINLESS STEEL STEP	ALUMINIUM STEP	GALVANIZED STEEL
Core Material	Stainless Steel 16mm Dia Rod	Aluminium Extrusion 16mm Dia Rod	Mild Steel Rod 16mm Galvanized
Grade	201 - Non Magnetic / 316 (as request)	AA6063T4	IS 7887
Coating	PE 5mm Thickness	PE 5mm Thickness	PE 5mm Thickness
Galvanizing Thickness	Not Applicable	Not Applicable	7 - 8 Micron
Weight	1.350 Kg	0.630 kg	1.360 Kg
Packing	15 pcs / bag	15 pcs / bag	15 pcs / bag

GSDS/MST/03

PRODUCT RANGE

SPECIFICATION (All are in mm)

A - Shoulder Height C - Leg Length
 B - Dowell Distance D - Grip Area

NAME	CODE	(DIA) CORE MATERIAL	PLASTIC ENCAPSULATION IN mm	A	B	C	D	WEIGHT (in kg)
Stainless Steel Step	ST SS 014	16	2-5	50	330	225	70	1.35
Aluminium Step	ST AL 016	16	2-5	50	330	225	70	0.63
Steel Step with Zinc coating	ST GS 018	16	2-5	50	330	225	70	1.35
Stainless Steel Step with Reflectors	ST SS 020	16	2-5	NA	330	225	85	1.400
Aluminium Step with Reflectors	ST AL 021	16	2-5	NA	330	225	85	0.670
Steel Step with Zinc coating with Reflectors	ST GS 022	16	2-5	NA	330	225	85	1.400
Stainless Steel Step with Reflectors (B) Type	ST SS 029	16	2-5	NA	330	225	80	1.470
Steel Step with Zinc coating with Reflectors (B) Type	ST GS 030	16	2-5	NA	330	225	80	1.470
Aluminium Step with Reflectors (B) Types	ST AL 031	16	2-5	NA	330	225	80	0.710
Stainless Steel Handbar	HB SS 015	16	2-5	50	200	230	70	1.150
Aluminium Handbar	HB AL 017	16	2-5	50	200	230	70	0.520
Steel Handbar with Zinc coating	HB GS 019	16	2-5	50	200	230	70	1.150
Steel Step with Zinc coating	ST GS 028	12	2-5	NA	145	270	145	0.800
Steel Step	ST MS 027	12	2-5	NA	145	270	145	0.800



Drill Bits



Epoxy



Extrusion Welding



Warning Tapes



Hot Air Welding



Plastic Welding Rods



Plastic Welding Strips



T-Liner



Liner